

# Field Quality Control Update

Moe Srifi

Efficiency First California

[Moe@efficiencyfirstca.org](mailto:Moe@efficiencyfirstca.org)

510 788 0463

June 11, 2014



## Equipment — Disconnected Pipe



# Cutting Corners Led to Deaths

Involuntary manslaughter claims filed in deaths of two men in connection with deadly Carbon Monoxide exposure



## Equipment — Furnace



4

## Attic — Missing Insulation



## Attic — Knee Wall Not Insulated



Insulate me  
to R-19  
please

## Attic — Do Not Use Radiant Barrier



## Attic — Missing Insulation





## Attic — No Fire Clearance



**B-vent** = 1 inch  
**Masonry Chimney** = 3 inches  
**Single wall** = 6 inches

## Bad Ductwork



10

## Ductwork — Restricted



## CAS — Gas Line Not Capped

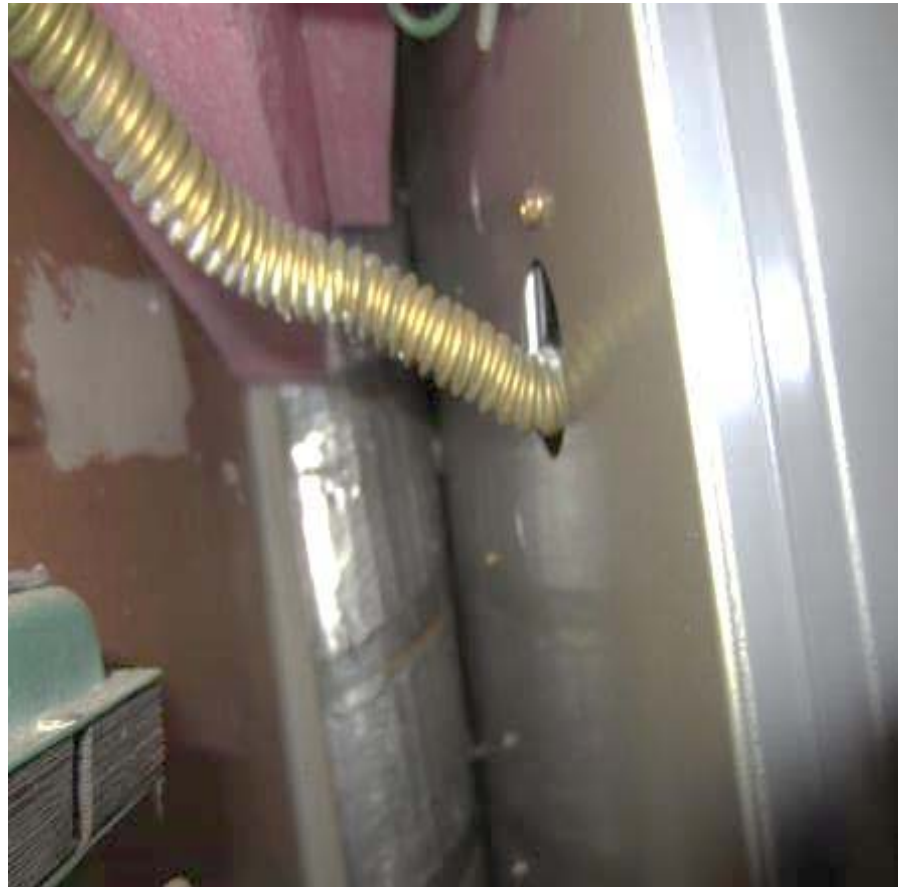


## Filter — Not Changed



13

## Gas Line — Pre-1973



## CAS — Clogged Register



## CAS — Sign of Spillage





## CAS — Sign of Spillage



17

## No Fire Clearance



## CAS — No CVA



# CAS — Higher CO Reading at Fireplace



## CAS — Pipe Connections Not Fastened



- Three Screws
- No gaps

# Gas Leaks



22

# No Air Sealing!



## CAS — Communication Issue





## Air Sealing — No Weather-Stripping



25

# Need to Renew Your BPI Certification?

We can help!



---

**TEST CENTER**

---

Contact Efficiency First California  
for more details!



Thanks for Listening

Any Questions!

