

Sacramento Municipal Utility District Home Performance Program (HPP)



PROGRAM UPDATE REVIEW

CHRIS CONE

HOME PERFORMANCE PROGRAM TEAM

EFFICIENCY FIRST CALIFORNIA

CHRIS@EFFICIENCYFIRSTCA.ORG

510 889-9773

SEPTEMBER 17, 2014



Lighting Fixtures

Standard
screw-in
fixtures
or no fixture



Pin-based
sockets and
bulbs meeting
Title 24 high
efficacy
standards

**\$100 per fixture, up to
5 fixtures (max. \$500)**

Pool Pumps

3

Reminder: You can get the HPP pool pump rebate if:

- ❑ **Your customer hires a certified pool pump professional** to install a qualifying pool pump
- ❑ You subcontract a certified pool pump installer
- ❑ Your pool pump–certified staff installs the pool pump

Pool pump replacement with controller:

- ❑ Single-speed, variable speed = \$400
- ❑ Two-speed, variable speed = \$250

Pool pump	Replace pool pump	Single-speed	Variable-speed	\$400		❑
		Two-speed	Variable-speed	\$250		❑

Mini-Split Heat Pump Retroactive

4

Have you installed a mini-split system since January 1, 2014?

If you installed a mini-split year-to-date, and your customer can now be converted to doing the rest of the mandatory HPP measures, then SMUD will honor the mini-split as part of the HPP project

Ask the HPP team for details.

Mini-Split Heat Pump Retroactive

5

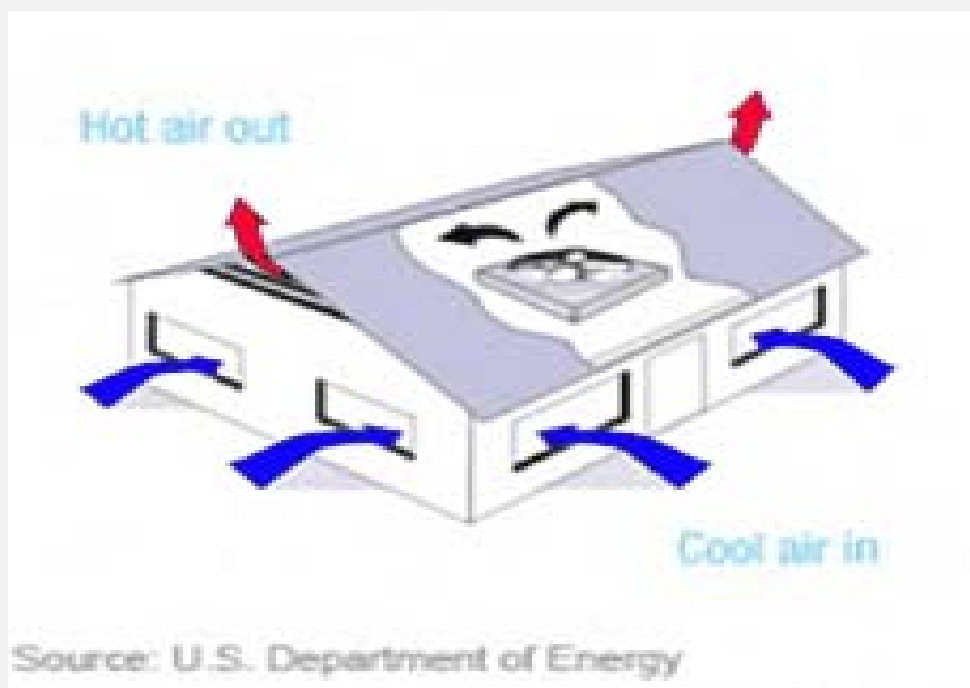
If you wish to use this rebate offer:

- Modify existing Post_Appr JRT to include complete pre-upgrade and post-upgrade HVAC conditions (including new mini-split SEER, EER, and HSPF)
- Ensure the JRT accurately reflects the recipient of the rebate. (By default, we will send the mini-split rebate to the same recipient as the previous HPP rebate)
- Send this information to smudcontractors@bki.com. BKi will follow up via email and via Vision in the original HPP project application.

Whole-House Fan

6

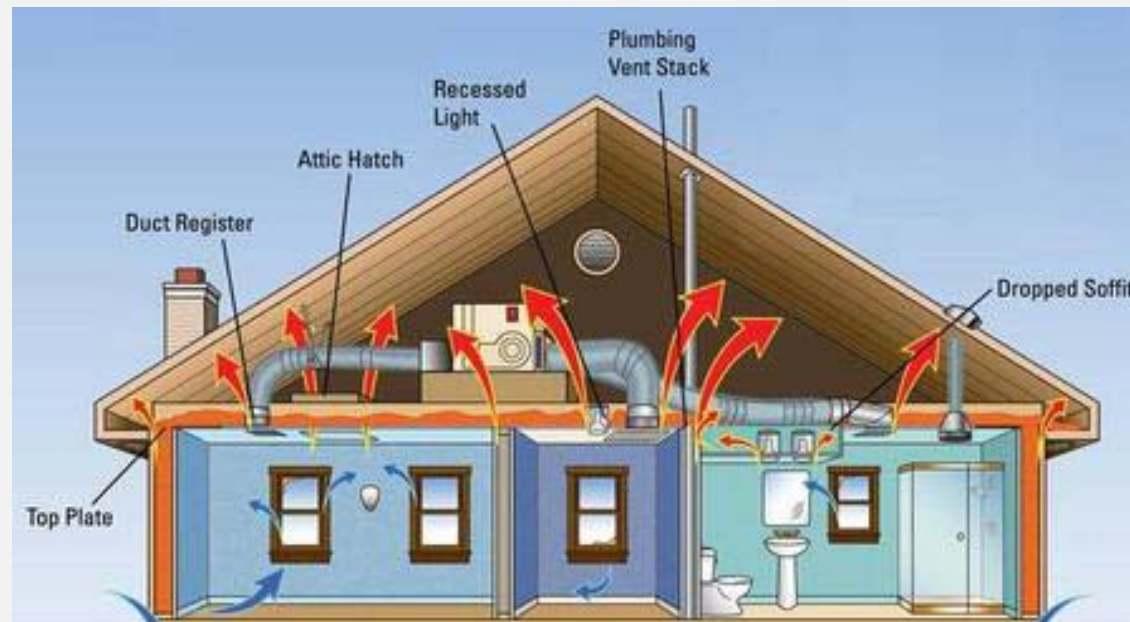
- ❑ Get \$150 for installing whole house fan
- ❑ Must be rated for ≥ 10000 CFM



Rebate Increase — Tier 1 Attic Sealing/Insulation

7

- ❑ **New \$100 rebate** for every 100 square feet of attic floor space for sealing and new insulation up to \$2,000



Air Sealing Rebates



- ❑ **Tier 1: 15% reduction** — \$25 per 500 sq. ft. conditioned home area (max. \$200)
- ❑ **Tier 2: 30% reduction** — \$50 per 500 sq. ft. conditioned home area (max. \$400)
- ❑ **Tier 3: 30% reduction + mechanical ventilation** per ASHRAE standards — \$300 + \$50 per 500 sq. ft. conditioned home area (max \$600)

Electrically Heated Home Rebates

9

- ❑ Envelope and HVAC measure rebates are now ***doubled*** for homes with electric resistance or electric heat pump heating implemented since January 20, 2014.
 - Affected measures include envelope insulation, air sealing, windows, HVAC replacements, HVAC downsizing, and duct sealing/replacement/burying.
- ❑ Increased rebates are based on the proposed or post-upgrade heat source.
 - Enter the proposed or post-upgrade heater type on the JobInfo tab in order to automatically activate increased rebates on the JRT Menu tab.
- ❑ The maximum total rebate for homes with electric heat is **\$8000**.

Electrically Heated Home Rebates

10

Available NOW!
\$1,000 rebate for
heat-pump
water heaters

Electrically Heated Home Rebates

11

- ❑ Average HPP rebates since January 20, 2014
 - Homes with gas heater: \$2,044
 - Homes with electric heater: \$3,621
- ❑ Total project rebates are 77% higher for homes with electric heaters
- ❑ See “hot spot” maps on HPP Website for electrically heated subdivisions

Sacramento Municipal Utility District Home Performance Program (HPP)



ANY QUESTIONS?